

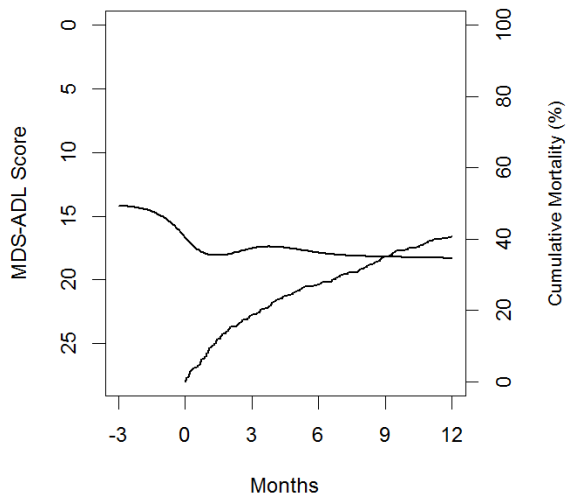
# Outcomes after Breast Cancer Surgery among Nursing Home Residents in the United States

- Optimal treatment for breast cancer for women with limited life expectancy in controversial
  - Disease progresses slowly, often minimally symptomatic
  - Downstream consequences of surgery in frail women are unknown
- Population-based retrospective study of nursing home residents who underwent breast surgery
  - Data sources: Minimum Data Set for NH + MEDPAR (Medicare inpatient files)
  - Procedures: lumpectomy, mastectomy, either + axillary dissection
- Outcomes of interest
  - 30 day mortality and hospital readmission
  - One year mortality
  - Functional status (MDS-ADL summary score)

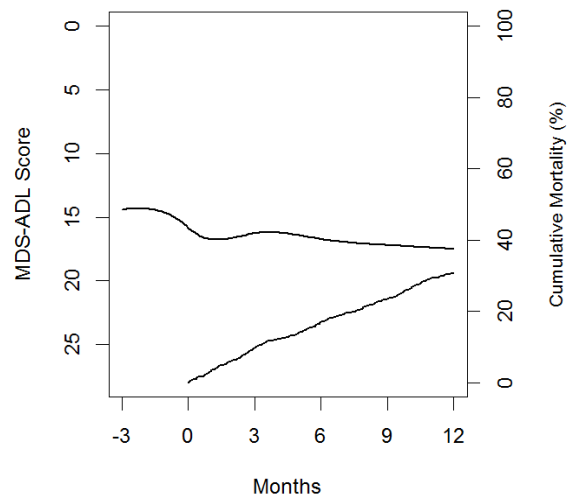
## 30 day outcomes

	Lumpectomy	Mastectomy	Either + Axillary
Mortality	8.0%	3.3%	1.6%
Hospital Readmission	27.5%	13.1%	14.7%

Lumpectomy



Mastectomy



Either and Axillary

